

Computational Intelligence-Based Educational Assessment Using Fuzzy Logic for Objective and Subjective Examination Analysis

ALKA AGRAWAL (Research Scholar)

PROF. SHUBHNESH KUMAR GOYAL

Department of Mathematics, D.S. College, Aligarh affiliated to Raja Mahaendra Pratap Singh University, Aligarh (U.P.)

Abstract

“This study presents a comprehensive comparative educational assessment framework based on fuzzy logic for evaluating objective and subjective mathematics examination systems. The research investigates conceptual understanding, analytical reasoning, educational uncertainty, and intelligent grading capability using fuzzy inference techniques. Experimental data were collected from twenty students who participated in both MCQ-based objective examinations and descriptive subjective examinations. The obtained scores were normalized and analyzed using fuzzy classification, statistical interpretation, and graphical visualization methodologies. The findings indicate that subjective examinations integrated with fuzzy logic provide superior conceptual interpretation, stronger analytical differentiation, and improved educational reliability compared to traditional binary objective evaluation systems. The proposed framework contributes to intelligent educational analytics and competency-based learning assessment in higher education institutions.”

Keywords

Fuzzy Logic, Artificial Intelligence, Learning Analytics, Intelligent Evaluation, Mathematics Education, Objective/Subjective Examination, Computational Intelligence; Fuzzy Logic; Educational Assessment; Learning Analytics; Artificial Intelligence in Education; Intelligent Evaluation Systems; Mathematics Education; Educational Data Mining; Hybrid Assessment Systems; Fuzzy Inference Systems.

1. Introduction

Educational assessment is one of the most critical components of modern higher education systems because it directly influences learning quality, academic decision-making, and student competency evaluation. Universities and educational institutions worldwide utilize different examination methodologies to assess conceptual understanding, analytical reasoning, and problem-solving capability among learners.

Objective examination systems are widely adopted due to their rapid evaluation capability, scalability, and ease of implementation. However, these systems frequently fail to capture conceptual depth and analytical flexibility because they primarily rely on binary response mechanisms. Students may achieve high scores through memorization or guessing strategies without demonstrating true conceptual understanding.

Subjective examinations, in contrast, provide deeper educational insight by evaluating descriptive reasoning, mathematical derivation, conceptual clarity, and analytical interpretation. Nevertheless, subjective assessment systems often involve uncertainty and variability in grading processes.

Fuzzy logic offers an effective computational framework for uncertainty handling and gradual performance classification. By integrating fuzzy inference systems into educational assessment, a more intelligent and human-like evaluation methodology can be developed. This research therefore investigates a comparative fuzzy logic-based intelligent framework for objective and subjective mathematics examination systems.

2. Literature Review

Fuzzy logic has emerged as an important branch of artificial intelligence and computational intelligence because of its capability to represent uncertainty and partial truth values. Since the introduction of fuzzy set theory by Lotfi A. Zadeh, researchers have extensively applied fuzzy systems in engineering, automation, medical diagnosis, and intelligent decision-making applications. In educational research, fuzzy logic has been increasingly utilized for grading systems, adaptive learning environments, educational analytics, and student performance prediction. Several studies have suggested that traditional binary examination systems are limited in evaluating higher-order cognitive skills and conceptual understanding. Educational data mining researchers have also demonstrated that intelligent computational systems can significantly improve educational reliability and competency-based evaluation frameworks. Subjective assessment systems integrated with fuzzy classification mechanisms allow gradual interpretation of student performance rather than rigid pass-fail decisions.

The present study extends these research contributions by integrating fuzzy logic with comparative analysis of objective and subjective mathematics examination systems in higher education.

3. Research Objectives

The primary objective of this research is to develop a comparative intelligent educational assessment framework using fuzzy logic for evaluating objective and subjective mathematics examination systems.

The study also aims to investigate the limitations of binary MCQ-based examinations and evaluate whether subjective examinations provide stronger conceptual differentiation among students.

Another important objective is to analyze educational uncertainty and partial knowledge representation through fuzzy classification techniques.

Additionally, this research seeks to contribute to competency-based learning assessment and intelligent educational analytics in higher education institutions.

4. Research Methodology

The experimental study involved twenty students who participated in both objective and subjective mathematics examinations. The objective examination carried fifty marks and consisted of MCQ-based questions, whereas the subjective examination carried twenty-five marks and included descriptive mathematical problem-solving questions.

The obtained scores were normalized into percentage values to facilitate comparative analysis. Fuzzy classification categories were defined as Poor, Average, Good, Very Good, and Excellent.

The research methodology involved multiple stages including data collection, score normalization, fuzzy classification, comparative educational analysis, statistical interpretation, and graphical visualization. Advanced educational analytics techniques were also incorporated for performance variability analysis and conceptual differentiation.

5. Fuzzy Logic Framework

Fuzzy logic is a mathematical framework designed to handle uncertainty and approximate reasoning. Unlike conventional binary systems that classify information into rigid categories, fuzzy systems allow gradual membership representation and partial truth values.

In educational assessment, fuzzy logic enables intelligent grading systems capable of evaluating conceptual understanding, analytical reasoning, and uncertainty in student performance.

Triangular membership functions were utilized in this study to classify students into different performance categories. The fuzzy inference framework improved educational interpretability by reducing abrupt classification boundaries and introducing gradual performance transitions. This approach provides more realistic educational assessment compared to traditional binary evaluation methodologies.

6. Experimental Dataset and Analysis

The experimental dataset consisted of comparative performance records of twenty students who participated in both objective and subjective mathematics examinations. Significant variation was observed between objective and subjective examination performance. Several students who obtained relatively high scores in objective examinations demonstrated lower conceptual understanding in subjective descriptive assessments. This observation indicates the influence of memorization and guessing probability in binary MCQ systems.

Students who performed consistently across both systems demonstrated stronger conceptual understanding and analytical capability. The dataset therefore highlights the importance of integrating intelligent assessment methodologies into higher education evaluation systems.

7. Statistical Interpretation

The statistical analysis revealed substantial differences between objective and subjective evaluation systems. The average objective examination performance was observed as 55.80% whereas the average subjective examination performance was 49.60%. Variance and dispersion analysis demonstrated that subjective examinations provide stronger conceptual differentiation among students. The fuzzy classification mechanism improved educational reliability by introducing gradual membership representation and uncertainty handling.

The statistical findings strongly support the adoption of intelligent educational assessment systems for competency-based learning evaluation.

8. Results and Discussion

The comparative analysis clearly demonstrates that subjective examinations integrated with fuzzy logic provide superior educational reliability compared to objective binary examination systems. Objective examinations often generated relatively inflated scores for students relying primarily on memorization or guessing strategies. Subjective examinations, however, provided stronger conceptual differentiation and analytical interpretation capability.

The graphical and statistical analysis strongly supports the integration of fuzzy inference systems into educational assessment because these systems improve interpretability, conceptual evaluation, uncertainty management, and intelligent educational analytics.

The proposed framework may significantly improve academic quality assurance systems and competency-based educational evaluation methodologies in higher education institutions.

9. Educational Implications

The findings of this research have important implications for universities and higher education institutions seeking to improve educational quality assurance and student competency evaluation.

Integrating fuzzy logic into educational assessment systems can significantly improve conceptual interpretation, analytical reasoning evaluation, and intelligent grading capability. Such systems may also support adaptive learning environments, educational analytics, and academic decision-making.

The proposed framework therefore contributes to the development of intelligent educational technologies and competency-based learning evaluation methodologies.

10. Conclusion

This research concludes that subjective mathematics examinations integrated with fuzzy logic provide stronger conceptual evaluation capability and improved educational reliability compared to traditional objective binary examination systems.

The proposed intelligent framework successfully handled uncertainty, analytical reasoning evaluation, conceptual differentiation, and gradual performance representation. The findings demonstrate the importance of integrating intelligent computational methodologies into higher education assessment systems.

Future research may further extend this framework through machine learning integration, neuro-fuzzy systems, adaptive educational analytics, and automated answer evaluation technologies.

Comparative Dataset Table

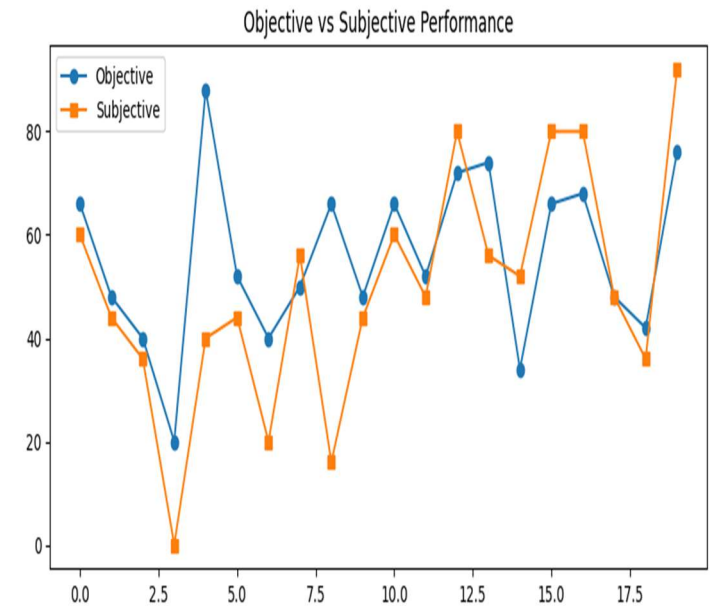
S.No	Student Name	Objective (%)	Subjective (%)
1	Pushpendra Singh	66	60
2	Bhumika Rani	48	44
3	Vivek Singh	40	36
4	Vandini	20	0
5	Vanshika Jadoun	88	40
6	Jay Pratap Singh	52	44
7	Rohan Kumar	40	20
8	Kushpal Tomar	50	56
9	Lucky	66	16
10	Vishal Kumar	48	44
11	Yash Raj Varshney	66	60
12	Bhavishya Bagri	52	48

13	Pooja Mehta	72	80
14	Mantisha Fatima	74	56
15	Anmol Goswami	34	52
16	Aditya Kumar	66	80
17	Tejasv Varshney	68	80
18	Chetan Kumar	48	48
19	Hemant Chaudhary	42	36
20	Kanika Gupta	76	92

Advanced Graphical Analysis

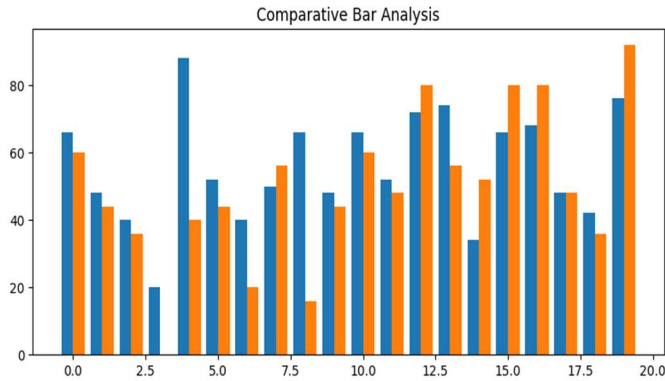
Objective vs Subjective Performance

Figure 1 demonstrates the comparative performance variation between objective and subjective examination systems among students.



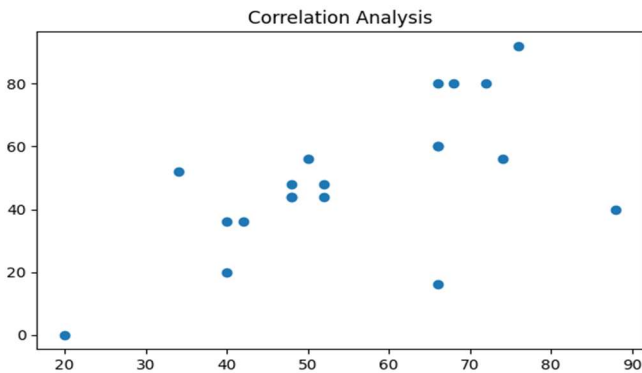
Comparative Bar Analysis

Figure 2 highlights score distribution trends and comparative educational performance patterns.



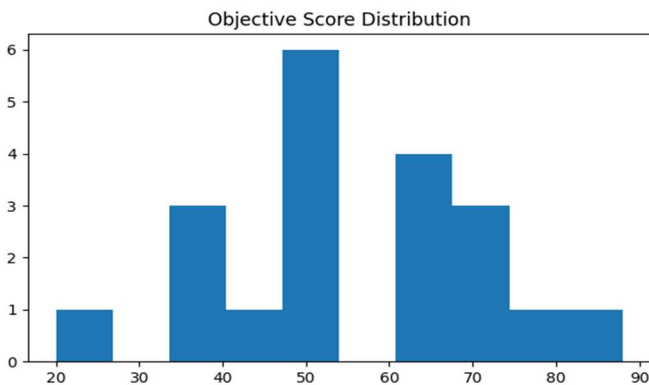
Correlation Analysis

Figure 3 illustrates the relationship between conceptual and binary evaluation systems through correlation analysis.



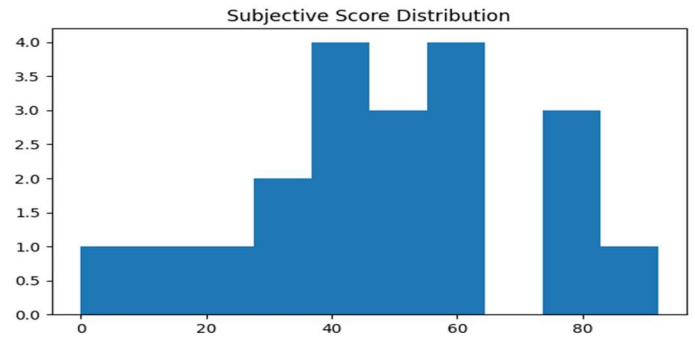
Objective Score Distribution

Figure 4 presents the distribution pattern of objective examination scores.



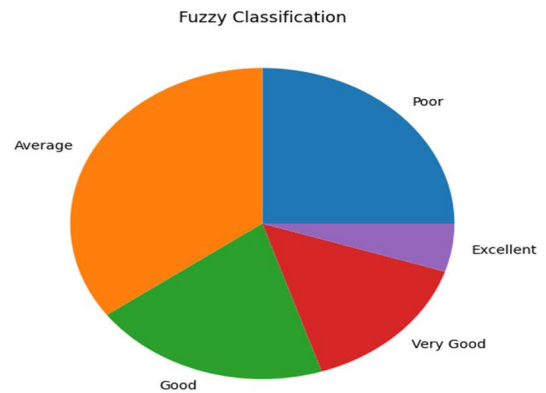
Subjective Score Distribution

Figure 5 presents the distribution pattern of subjective examination scores.



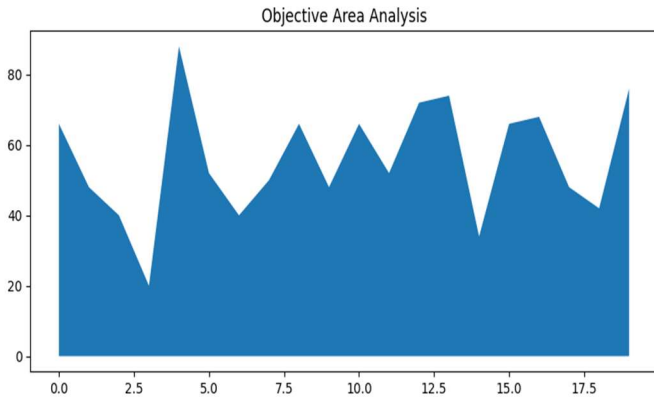
Fuzzy Classification Pie Chart

Figure 6 demonstrates fuzzy classification distribution among different educational performance categories.



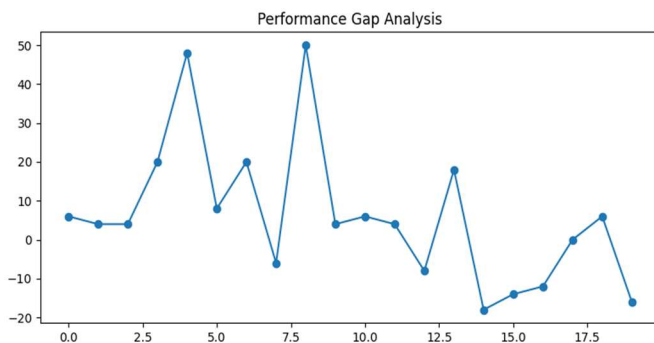
Objective Area Analysis

Figure 7 illustrates cumulative objective performance behavior using area analysis.



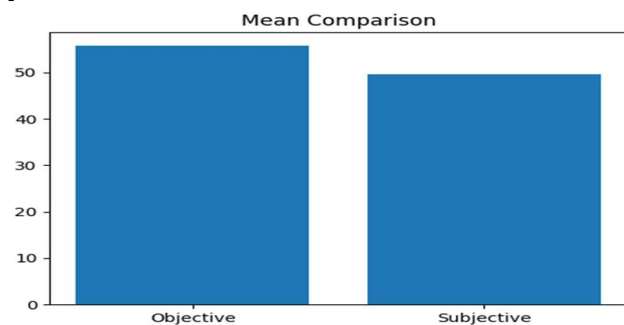
Performance Gap Analysis

Figure 8 highlights performance gaps between objective and subjective examination methodologies.



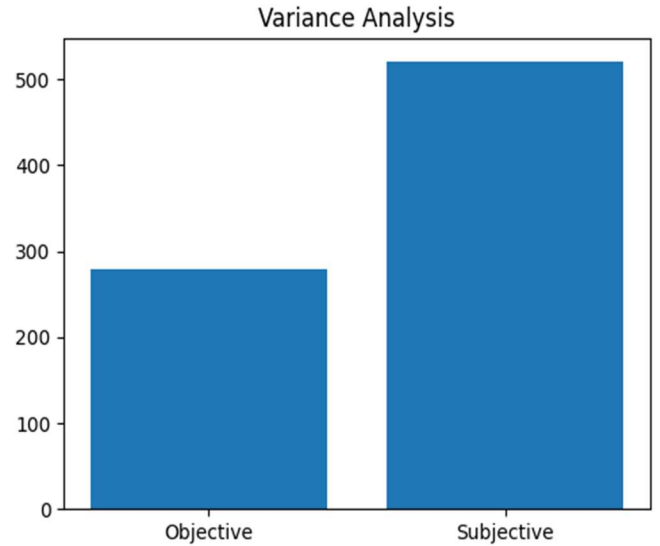
Mean Performance Comparison

Figure 9 compares average educational performance between both examination systems.



Variance Analysis

Figure 10 demonstrates variance and dispersion analysis for educational reliability interpretation.



Discussion

Objective examination systems provide fast evaluation but are limited in measuring conceptual understanding and analytical reasoning capability.

Subjective examinations integrated with fuzzy logic improve educational reliability and conceptual differentiation among learners. Fuzzy inference systems allow gradual performance representation instead of rigid binary classification.

Statistical analysis demonstrates stronger conceptual interpretation capability in descriptive assessment systems.

Hybrid intelligent educational assessment frameworks may significantly improve competency-based learning evaluation in higher education.

Educational analytics integrated with fuzzy systems can support academic quality assurance and intelligent decision-making.

References

1. Zadeh, L.A., "Fuzzy Sets," *Information and Control*, vol. 8, no. 3, pp. 338–353, 1965.
2. Ross, T.J., *Fuzzy Logic with Engineering Applications*, Wiley Publications, 2010.
3. Mendel, J.M., *Fuzzy Logic Systems for Engineering: A Tutorial*, IEEE Press, 1995.
4. Zimmermann, H.J., *Fuzzy Set Theory and Its Applications*, Springer, 2001.
5. Wang, S., et al., "Artificial Intelligence in Education: A Systematic Literature Review," *Expert Systems with Applications*, Elsevier, 2024.
6. Wu, H., and Xu, Z.S., "Fuzzy Logic in Decision Support: Methods, Applications and Future Trends," *International Journal of Computers Communications & Control*, vol. 16, no. 1, 2021.
7. Dilmaç, S., "Student Opinions on the Evaluation of Performance with Fuzzy Logic," *Educational Research and Reviews*, 2025.
8. Pradeep, A., and Thomas, J., "Performance Assessment for Students Using Different Defuzzification Techniques," *International Journal for Innovative Research in Science and Technology*, vol. 2, no. 6, pp. 43–53, 2015.
9. Gao, R., et al., "Automatic Assessment of Text-Based Responses in Post-Secondary Education: A Systematic Review," 2023.
10. Lee, C.S., et al., "AI-Fuzzy Markup Language with Computational Intelligence for High-School Student Learning," 2021.
11. Pedrycz, W., *Computational Intelligence: An Introduction*, CRC Press, 1998.
12. Castillo, O., "A Survey on Type-3 Fuzzy Logic Systems and Their Applications," *IEEE/CAA Journal of Automatica Sinica*, 2024.
13. Saatchi, R., "Fuzzy Logic Concepts, Developments and Implementation," *Information Journal*, MDPI, 2024.
14. Askarbekuly, N., and Luković, I., "Learning Outcomes, Assessment, and Evaluation in Educational Recommender Systems: A Systematic Review," 2024.
15. Garg, H., and Rani, D., "Novel Aggregation Operators for Complex Intuitionistic Fuzzy Sets and Their Applications," *Artificial Intelligence Review*, 2020.

Research Novelty

The novelty of the proposed research lies in the integration of computational intelligence and fuzzy logic for comparative educational assessment of objective and subjective mathematics examination systems. Unlike conventional educational analytics models, the proposed framework combines conceptual interpretation, uncertainty handling, and intelligent fuzzy classification to improve competency-based evaluation. The study also contributes a comparative analytical framework that highlights the limitations of binary objective examinations and demonstrates the effectiveness of descriptive assessment integrated with fuzzy inference systems.

Research Contributions

The major contributions of this study include the development of an intelligent educational assessment framework using fuzzy logic, comparative analysis of objective and subjective examination systems, implementation of fuzzy classification for conceptual performance interpretation, integration of graphical and statistical educational analytics, and the proposal of a competency-oriented intelligent evaluation methodology suitable for higher education institutions.

Practical Implications

The proposed framework may assist universities, accreditation bodies, and educational institutions in improving academic quality assurance systems. The integration of fuzzy educational analytics can support fair grading policies, conceptual assessment, adaptive learning environments, and intelligent academic decision-making processes. The model may also contribute to outcome-based education systems and competency-driven curriculum evaluation.

Limitations of the Study

The present study was conducted using a limited dataset of twenty students and focused specifically on mathematics examination systems. Future studies may incorporate larger multi-institutional datasets, interdisciplinary educational domains, machine learning integration, and automated descriptive answer evaluation systems to improve scalability and generalizability.

Future Research Directions

Future research may extend the proposed framework through neuro-fuzzy systems, deep learning-based educational analytics, adaptive intelligent tutoring systems, automated answer evaluation mechanisms, and predictive educational data mining approaches. Large-scale implementation of hybrid intelligent assessment systems may further improve competency-based learning evaluation and academic analytics.

Ethical Considerations

The research was conducted exclusively for academic and educational analysis purposes. Student performance records were utilized only for comparative educational evaluation, and no sensitive personal information was disclosed.

The proposed framework aims to improve educational fairness, conceptual interpretation, and intelligent assessment reliability in higher education systems.